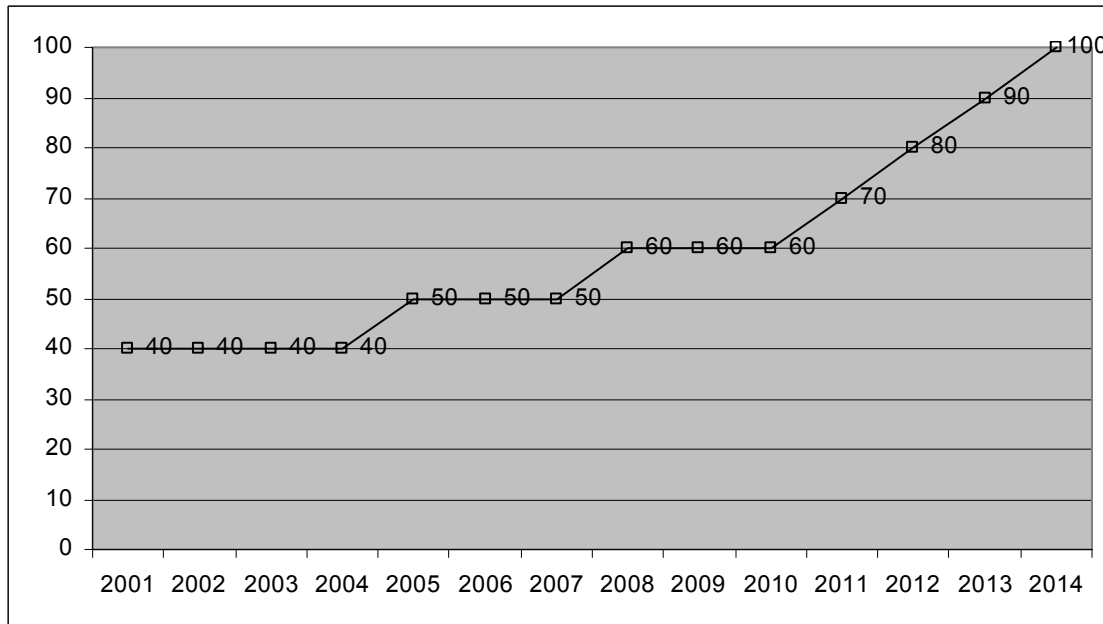


**Meeting AYP by 2014**



**Hypothetical School I: Whole School AYP; Wisconsin**

Reading proficiency benchmark = 40%; Student enrollment = 500

Adequate Yearly Progress with annual intermediate goals: [www.dpi.state.wi.us/dpi/esea/pdf/wiaw.pdf](http://www.dpi.state.wi.us/dpi/esea/pdf/wiaw.pdf)

**Moving subgroups to proficiency**

<i>Students in subgroup</i>	<i>Moved to proficiency in 2004</i>	<i>Moved to proficiency in 2005</i>
120	48	60
60	24	30
90	36	45
130	52	65
100	40	50
<b>Total: 500</b>	<b>200</b>	<b>250</b>

*50 students must be moved to proficiency by end of 2005*

*Subgroups must meet proficiency levels at same rate as whole school (exception: Safe Harbor Provision)*

***Reading Together Builds Capacity, Moves More Students to Proficiency***

***Extends Your Reach:*** Target two groups of 30 tutor/tutee pair per semester, or 120 students per year (tutees and low-performing tutors)

***Demonstrates Measurable Results:*** 87.5 average success rate at program completion

***The Result:*** 105 students moved to AYP by End of Grade